

# 1 South Africa

Total Number of Proposals: 39  
Time Available for Partner: 336.6 hrs  
Time Requested from Partner: 487.5 hrs  
Subscription rate for Partner: 1.45  
Average request per proposal: 12.5 hrs  
Number of Thesis Projects: 11  
Number of P4 Proposals: 5  
Number of Long Term Proposals: 15

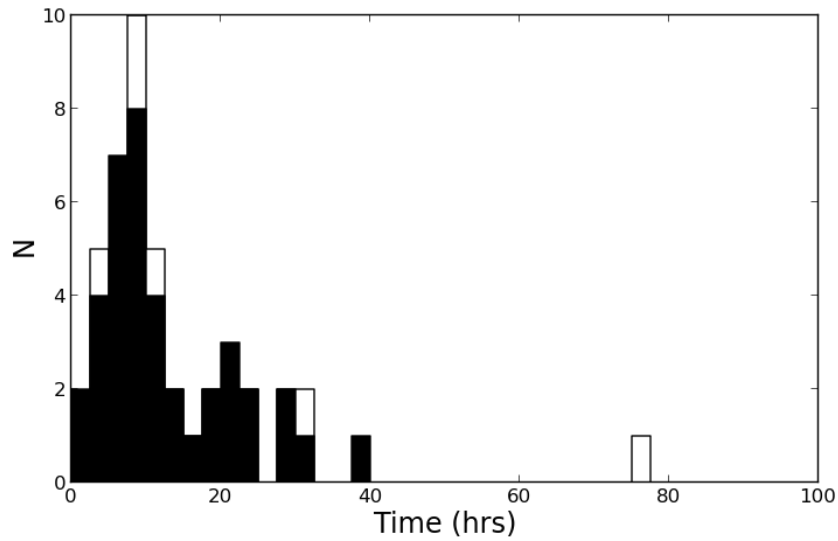


Figure 1: Distribution of Total time (white) and time requested from the partner (black) for RSA

## 1.1 Observing Statistics for RSA

Conditions	Time requested (hrs)	Number of Proposals	Fraction of Total Request (%)
Dark	262.7	25	53.88
Gray	75.5	13	15.49
Bright	28.9	6	5.93
Any	120.4	8	24.70
Photometric	30.9	5	6.34
Thin cloud	349.6	27	71.71
Scattered clouds	0.0	0	0.00
Any	107.0	7	21.95
<i>MaxSeeing</i> $\leq 1.0$	0.0	0	0.00
<i>MaxSeeing</i> $\leq 1.5$	57.9	9	11.88
<i>MaxSeeing</i> $\leq 2.0$	246.3	23	50.53
<i>MaxSeeing</i> $\leq 5.0$	487.5	39	100.00

## 1.2 Configuration Statistics for RSA

Instrument	Number of Proposals
RSS	32
SALTICAM	3
HRS	5
BVIT	1

### SALTICAM

Detector Mode	Number of Proposals
DRIFTSCAN	0
FRAME XFER	0
NORMAL	0
SLOT	3

### RSS

Detector Mode	Number of Proposals
DRIFT SCAN	0
FRAME TRANSFER	1
NORMAL	31
SHUFFLE	0
SLOT MODE	0
Observing Mode	Number of Proposals
Fabry Perot	2
FP polarimetry	0
Imaging	0
MOS	2
MOS polarimetry	0
Polarimetric imaging	0
Spectropolarimetry	0
Spectroscopy	28

### 1.3 Target Statistics for RSA

Total Number of Targets: 2026

Total Number of Mandatory Targets: 292

Total Number of Optional Targets: 1734

Number of Optional Targets to Observe: 962

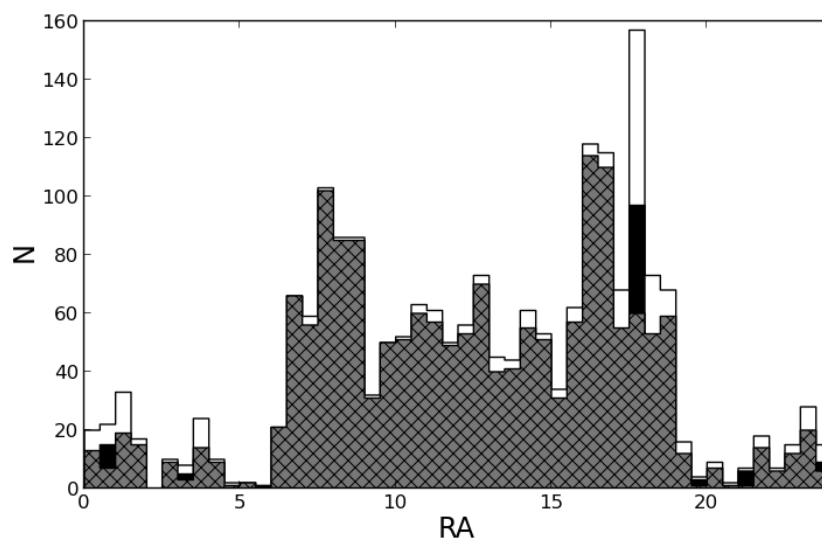


Figure 2: Distribution of RA for all (white), mandatory (black), and optional (grey) targets in the proposals for RSA

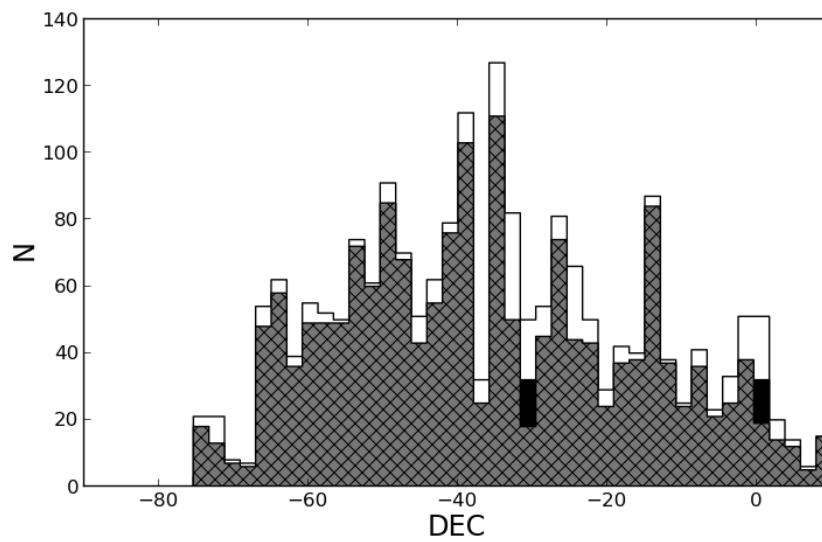


Figure 3: Distribution of DEC for all (white), mandatory(black), and optional (grey) targets in the proposals for RSA

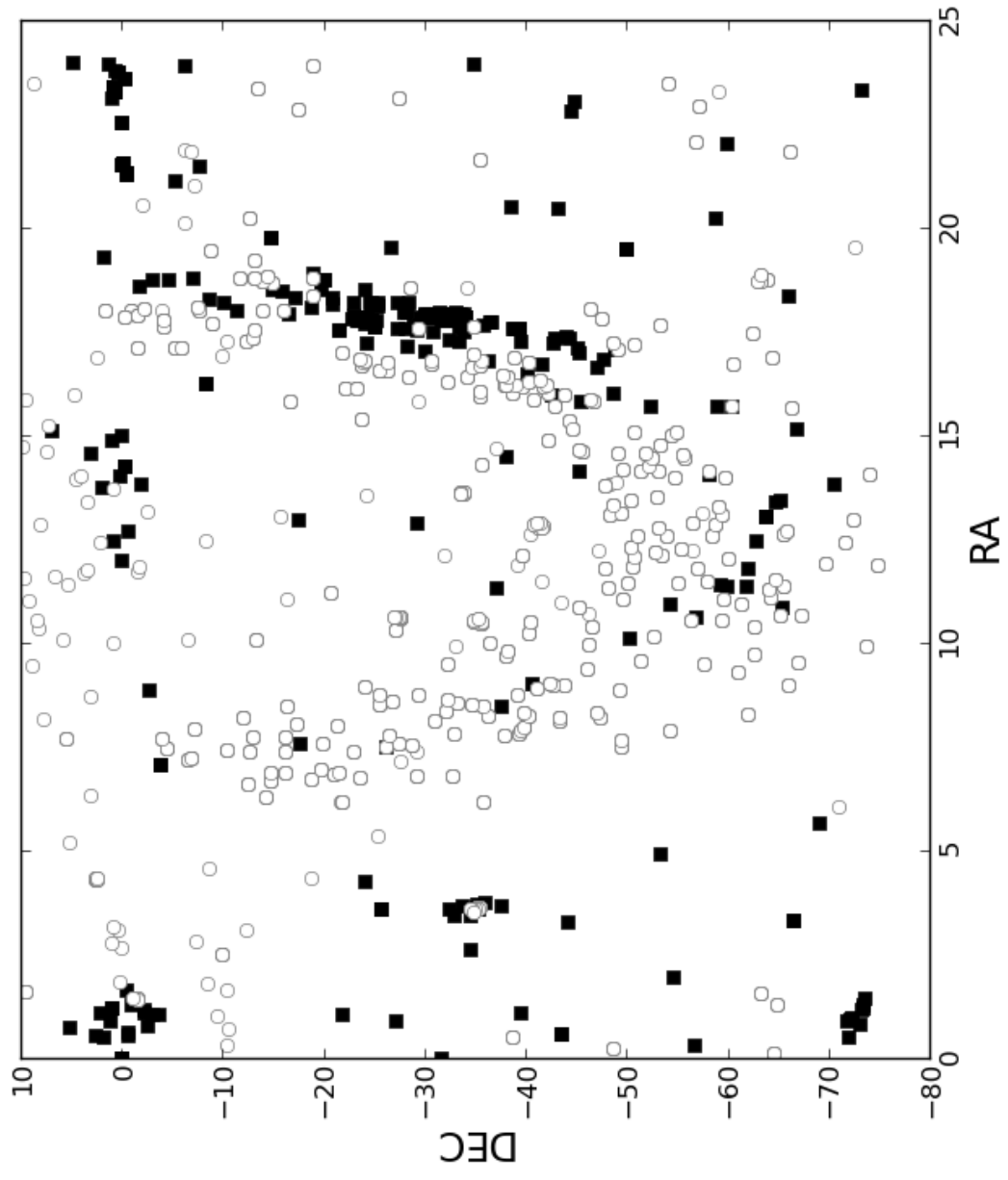


Figure 4: RA vs. DEC distribution for mandatory (black squares), and optional (grey, open circles) targets in the proposals for RSA